

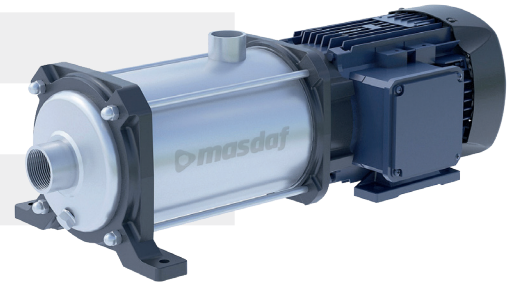
HexaLite

Horizontal Shaft Stainless Steel
Multistage Centrifugal Pump



HexaLite Horizontal Shaft Stainless Steel Multistage Centrifugal Pump

Suction Flange	: 1 1/4"
Discharge Flange	: 1"
Operating Pressure	: 10 Bar
Operating Temperature	: 0 - 60°C
Flow Range	: 1 - 7 m³/h
Man. Head Range	: 25 - 100 m
Speed Range	: 3000 rpm



Fields of Application

Drinking water supply,
Water pressurization in domestic and commercial buildings,
Water treatment plants,
Process water supply in industrial plants,
Agricultural irrigation.

Shaft Specifications

Motor shaft is used as the shaft in HexaLite series pumps.

Seal Applications

Mechanical seals are used as standard.
The mechanical seal is lubricated with pumped liquid.

Design Specification

HexaLite series pumps are horizontal-shaft, non-self-priming, multistage centrifugal pumps driven by a standard single-phase/three-phase electric motor and equipped with a stainless-steel impeller.

The mechanical seal and the additional protective gasket prevent water from entering the motor windings. In the event of leakage through the mechanical seal, water is discharged through the drain outlet on the pump casing. Thanks to this smart design feature, any potential failure is detected before water can reach the motor windings.

The pressure-resistant casing and flow-through components are secured between the pump top and bottom using casing studs.

The pump inlet is located at the bottom and the outlet at the top.

The pump rotates clockwise when viewed from the motor side.

Bearing

The bearings of the motor are used as bearings in HexaLite pumps.

Pump Coding

HexaLite 3000 - 6 M

Series Name _____
Pump Type _____
Number of Levels _____
Electrical Supply _____

PART NAME	MATERIAL		
	AISI 304	AISI 430F	Noryl
Suction Casing	●		
Impeller	●		
Shaft	●		
Pump Guard	●		

- Standard Material

***Making
The World
Better!***



Customer Service
+90 850 888 8 627

Orta Mahallesi Atayolu Caddesi
No:16 Tuzla - İstanbul / Türkiye

@ X YouTube f in
masdaf.com